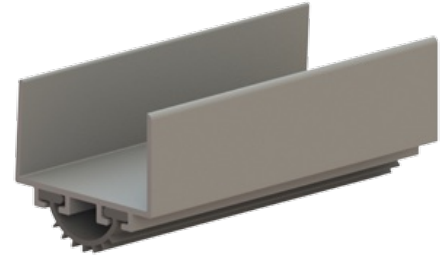


779S

Door Bottom

Notes:

- Lengths up to 48" are supplied 1/2" over their stated size to allow for fitting.
- Lengths over 48" are supplied 1" over size.
- "Cut to exact length" may be specified.
- Constructed of strong extruded 6063-T5 aluminum.



PRODUCT SPECIFICATIONS

FINISHES:

- MIL, DBA, GLD

INSERTS:

- V=Vinyl
- N=Neoprene, EDPM or TPE

CATEGORY:

- J, H

FASTENERS:

- #6 x 5/8" Pan Head sheet metal screws

SIZE:

- Width: 1 3/4" (45 mm) Strip height: 1/2" (13 mm)

EPD:

- [Door Bottom Environmental Product Declaration](#)